

# As the Wrench Turns

## CPMS User's Journal

### How is your "Knowledge Base"?

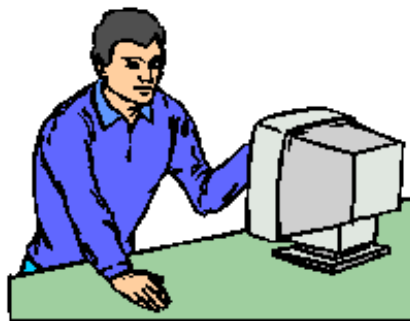
#### Your Plant's Information

One of the most important reasons to implement a Preventive Maintenance and Inventory Control program at your plant is to build and maintain a "knowledge base" of all critical Maintenance records and history.

A vulnerable time for almost any Maintenance Department is changes to key personnel. People leave the company and some of the critical information which they have been carrying around in their heads for years is lost. All the good things that people do every day to keep your plant running smoothly should not leave the plant with the mechanic.

At some plants experiencing very

few problems, the Chief Engineer may have no formal PM program, but he does know what needs to be done. What happens when he leaves? All those "little things" which kept the plant equipment happy, are no longer being performed. The new Chief will probably have to learn all of this information from the ground up, and consequently there will probably be some growing pains, i.e., equipment downtime.



A high quality Knowledge Base will help make this transition a lot smoother. If your CPMS files are correct, current, and complete, you have done a great service for your company by reducing the negative impact associated with changes in key personnel.

#### New Forms and Reports Tools

This month, we had a chance to see all the new tools available in our RBase data base manager. The "back end" which manages all of our CPMS data was released recently in RBase 6.5++. Most of our customers have already upgraded to CPMS 3.1 using the much improved RBase program.

The "front end", which we are presently using to upgrade all of our forms and reports, has some long awaited features which truly give CPMS all the Windows bells and whistles.

Fortunately, our customers don't subscribe to the notion that, "if it really looks good, it doesn't matter if it's right". But our goal of giving you everything you need to see on easy-to-read concise screens, with as few mouse clicks as possible, is a reality not a dream. The owner of the RBase company likes to say, "If you can dream it you can do it". We subscribe to that philosophy.

On the following two pages we will talk about some of the upcoming features.

#### CONTENTS

<i>CPMS User's Journal</i> . . . . .	1
<i>Your Plant's Information</i> . . . . .	1
<i>New Forms and Reports Tools</i> . . . . .	1
<i>New CPMS forms</i> . . . . .	2
<i>Chicago Bakery Show</i> . . . . .	4
<i>And the Winners are...</i> . . . . .	4
<i>CPMS Quiz</i> . . . . .	5
<i>On Site Training?</i> . . . . .	5
<i>Are you still playing with Blanks (nulls)?</i> . . . . .	5

## New CPMS forms

There are hundreds of new tools available to us in the new forms designer and we will incorporate all of those which result in the best screen forms possible. One long awaited feature is a Scroll Bar. This may not seem like a big deal, but it will go a long way to making the editing process a whole lot easier. Some of the forms which will take advantage of a scroll bar are the Master Schedule (below), Work Card processing, and Purchase Orders.

Another item is Check Boxes and Radio Buttons in multi row screen forms. We will take advantage of this feature for “Complete, Incomplete, or Not Done” when processing Work Cards, Taxable or Non Taxable in

Purchase Orders, and On Order or Received when entering Receipts, to name just a few examples.

While CPMS will be even more “mouse friendly”, we will still support the keyboard and function keys. But, at a plant where most of the PM’s are getting done, consider having your mouse on the scroll bar, sliding up and down through ALL of the PM’s for a given week, and then periodically clicking on the “Not Done” or “Incomplete” check box.

And, the new capabilities in the Report Designer, are just as impressive. For example, we can print your reports in all the popular formats, including Adobe PDF.

The screenshot shows the SCEDM\_EDIT software interface. At the top, there is a title bar with the text "SCEDM\_EDIT" and standard window control buttons. Below the title bar is a menu bar with buttons for "<", ">", ">>", "Save", "Delete", "Exit", "Again?", "Duplicate", "AForm", "EForm", and "Help".

The main form area contains several input fields and sections:

- Equipment Number:** B124, with a status indicator "In Service" and a checkbox.
- Description:** #6 MIXER
- Procedure Number:** B124, with a status indicator "In Book" and a checkbox.
- Description Ident:** E, 3 MONTHS
- Skills Required:** ME
- Scheduled Shift:** Time 08:00
- Employee:** 689 JOHNSON, SAMUEL
- Skills:** M
- Shift:** (empty)
- Minutes/Cost:** 60, \$10.25

There are two specialized input sections:

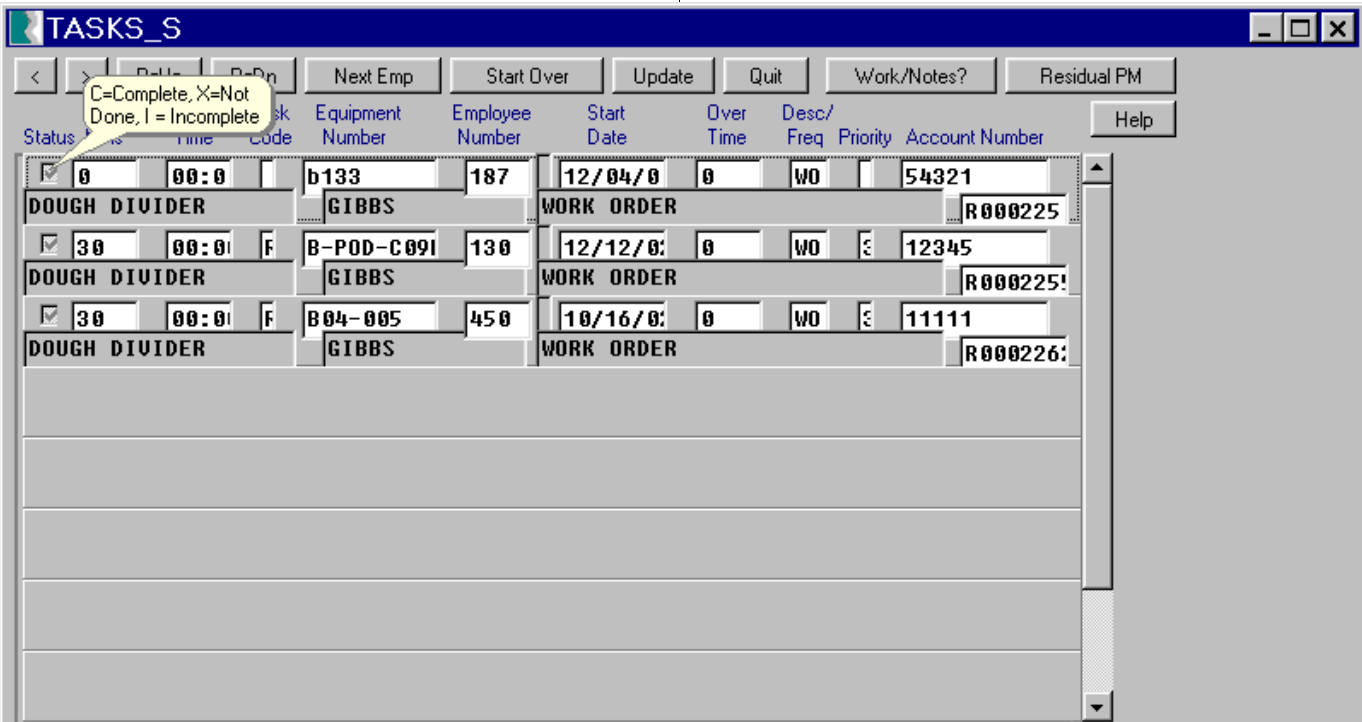
- CALENDAR:** Last Done 09/16/0, Increment 182, Due Next 03/17/0 Saturday.
- METER:** A vertical scale with a current reading of 0.

At the bottom, there is a table with columns "LN" and "PM Duty". The table contains 12 rows of maintenance tasks:

LN	PM Duty
1	CHECK SHAFT BEARINGS, CONDITION OF GLAND SEALS,
2	HUB, SHAFT AND MECHANICAL LINKAGE
3	DOOR: CHECK DOOR OPERATION & LINEAR LIMIT SWITCH
4	CHECK DOOR LIFTING CHAINS
5	CHECK DOOR SEAL CONDITION, LEAKAGE & SPACING BETWEEN DOOR & SEAL
6	CHECK DOOR WEAR STRIP, BRONZE WEAR PAD FOR PROPER SETTING
7	CHECK SPIDERS FOR CRACKS
8	ELECTRICAL: CHECK CONTACTORS, CLEAN OR REPAIR AS NECESSARY
9	TROUGH: CHECK CONDITION OF LINER
10	CHECK CLEARANCE OF AGITATOR SPIDERS
11	CHECK DRAIN OPERATION, CHECK ALL MOUNTING BOLTS
12	ELECTRICAL PANELS: MAIN CONTROL PANEL

Below the table, there are buttons for "Copy PM Duties", "To", "From", "Delete", and "Renumber".

Note in the Work Card screen below that we can put a “hint” on any/all column values. This is a great help aide. In this example, when you move your cursor over the Status check box, the allowable values are displayed.



## Chicago Bakery Show

We will have an opportunity to show off our new version of CPMS at the 79<sup>th</sup> Annual Technical Conference, hosted by the American Society of Baking, which is being held at the Chicago Marriott Downtown on March 9-11. We hope to see all of you there and please visit our table top display.

## And the Winners are...

Kimberly Montminy from Canada Bread, Langley, BC; Curt Ritter from Heiners Bakery, Huntington, WV; Cindy Like from Lewis Brothers, Vincennes, IN; and Eppie Upchurch from Lewis Brothers, Murfreesboro, TN.

And, we've given up on trying to publish a newsletter with only one spelling or grammar mistake. (The intentional error in last quarter's newsletter was on page four. It should have been "An easier ..." not "A easier ...")

So, the new contest will require a bit more thinking and help you (hopefully) learn a little more about CPMS. The CPMS quiz will ask you a question which you should be able to figure out using a standard CPMS function. The first, best answer will win \$100. If there are two or more equally good answers, then the prize will be split. And to get things started...

## CPMS Quiz

Even if you are not using CPMS 3.1, you have probably seen the new Plant Summary information on the new Main Menu. A couple of plants were surprised when they saw Equipment Failures with "future" dates, for example 4/25/04. How would you go about locating an invalid future date, even if you don't know the value of the date?



**Note:** For CPMS 3.1 users who are not recording Equipment Failures, but would still like to see the PM efficiency percentages, make sure and enter a dummy entry in the Equipment Failures at the end of each period.

## On Site Training?

This is the time of year when many of our customers have a little bit of a break and it's a good opportunity to schedule a training visit to your plant(s). CPMS 3.1 is more than just a new main menu and we want to make sure everyone is proficient in using all the new features.

As mentioned earlier, we will be redoing all the forms and reports this year and would like to get some firsthand input from our customers. Let us know when would be a good time to come to your plant and we can work up a 1, 2, or 3 day training agenda.

## Are you still playing with Blanks (nulls)?

More than a year and a half ago, we sent everyone a "FixNull" utility program which added constraints to your CPMS files. While there are many column values where it is OK for you to leave the value blank, there are some cases where blanks may cause problems. This is normally the case with dates, dollars, and quantities.

Most of you have successfully run this utility, but in some cases it wasn't successful and you weren't aware of it, or you may have had to restore a backup and inadvertently removed the constraints. In order to check if all is OK, try to enter a blank value in the Reason Why column in Equipment failures. Let us know if you don't get an error and we will make sure we help bring your files up to date.

\*\*\*\*\*

Dennis Fleming  
IISCO

2337 Hemlock Farms  
Hawley, PA 18428  
Tel.: 570 775-7593  
Fax: 570 775-9797  
E-mail: [iisco@ptd.net](mailto:iisco@ptd.net)  
[www.TheBestCMMS.com](http://www.TheBestCMMS.com)