

CPMS Newsletter

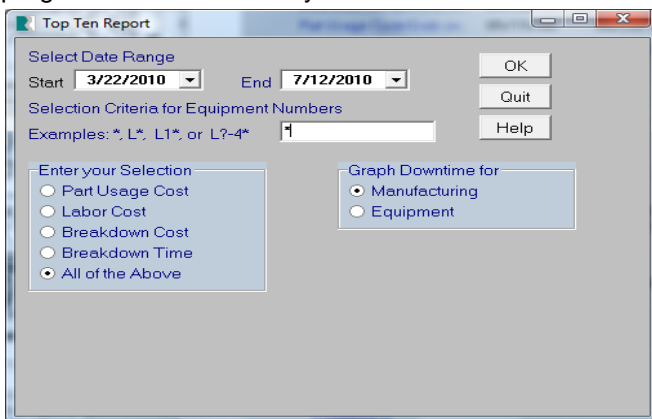
“As the Wrench Turns”

Volume 16, Issue 3

July 2010

Tweaking the Top Ten report selection screen

During the first half of this year we provided onsite CPMS training at many of our customers. It is an opportunity to see exactly how each plant is using CPMS, answer plant specific questions, and help them get more out of the features they use every day. It also gives us an opportunity to “show off” some of the new functions available in CPMS 4.30 and help the plant learn a few new tricks. In addition to getting some ideas for enhancements and possibly locating a couple of glitches, we can go back and change portions of the program to work differently/better.



Continued on page 2, Column 1

Please make sure you are using the new CPMS Help!

A lot of time and effort went into bringing both the online CPMS Help system and Manual up to date. In addition, all of the Help links in CPMS 4.30 match the new Help system so that when you click a Help button anywhere in CPMS it will always take you to the correct and up-to-date Help topic.

The CPMS Help folder location in the CPMS System Configuration screen, must match the folder where the CPMS.chm file is located. Many of our customers place CPMS Help on their local “C” drive in order to avoid any issues where you are not allowed to read a compiled help file on your server.

The new manual and online help files located on our website are in the old Zip file format which is compressed but not “encrypted”. If you have any problems in downloading these files, let us know and we will send them to you in an unzipped format. The password to download both files is **omf1108**.

As mentioned earlier, please feel to provide comments or suggestions as you use the new CPMS Help. If you want to check if you have the latest version, the manual has a date of May, 2010 on page 3.

INSIDE THIS ISSUE

- 1 Tweaking the Top Ten report selection screen
- 1 Please make sure you are using the new CPMS Help!
- 1 Component List or Part Equipment Cross Reference?
- 3 And the Winner is...
- 3 CPMS Quiz

Component List or Part Equipment Cross Reference?

Recently, a couple of customers asked if we could add a component function to CPMS. For each piece of equipment you could “drill down” for a list of assemblies, sub assemblies, components, sub components, and eventually individual parts. Even for a new plant with up to date documentation, this is a big job. One of the goals in having such a list is better

Continued on page 2, Column 2

In order to standardize the way you select a range of equipment for the Top Ten Report to tabulate and rank, you no longer enter a starting and ending equipment number. You enter a portion of the equipment number, and using the "*" and "?" wild card characters you can achieve the same results.

For example, if your oven on Roll line 1 is numbered R1-450 then some of your selection options are: "*" for all equipment in the plant, "R*" for all equipment in the Roll department, "R1*" for all equipment on Roll Line 1, "R?-4*" for all oven equipment on all Roll lines, and "*4??" for all oven equipment in the plant. Although not required, you can see the advantage of the same equipment having the same number. B2-450 and R3-450 could be ovens in different departments on different lines.

We recognize that for those customers using an equipment numbering system which does not follow one of our format recommendations, that entering a "starting" and "ending" number may be preferable. But, over the years, having a "special" selection method just for the Top Ten report has proven to be confusing. Give it a try in the upcoming CPMS 4.31 version and let us know what you think.

planning of your spare parts requirements.

As you do with almost all of your projects, what would be the cost/benefit? It would certainly be nice to bring up an equipment number and see an indented list of all the major systems which make up each piece of equipment in the plant and then to see each one further broken down to eventually every part which makes up every machine in your plant. Couldn't we just load such a list from each of your manufacturers?

The easy answer is that we can certainly provide this capability, but once the ball is in your court, would you ever have the time and resources to complete such a task? By way of example, only a few of our customers have inventoried the motors and gear boxes installed on their equipment, although that capability has always been part of CPMS.

While you are thinking about the pros and cons of a Component list, considered taking advantage of something you currently have but may not be using. When you enter parts for equipment into the Part/Equipment Xref screen form, do you always remember to include the "Quantity of this Part for this Equipment"?

If you have this information in CPMS it will go a long way in helping you establish better stocking levels for all your spare parts.

July 13, 2010
11:35 AM

PARTS/EQUIPMENT Cross Reference

Page 4 of 4
INTERNATIONAL INF

Equipment	Part Number	Installed on Equipment	Quantity On Hand	Location	Unit Price	Extended Price
T01-310	KHR202-15MM	1	5	013703	\$11.78	\$58.90
ROUND DIVIDER # 1	BEARING INSERT, FOR R/D IDLER, 15 MM BORE					
T01-310	KM-3	1	3	070709	\$5.81	\$17.43
ROUND DIVIDER # 1	NUT, LOCKING					
T01-310	LM5-14	1	1	100204	\$66.75	\$66.75
ROUND DIVIDER # 1	MODULE LOGI, DELAY, ON OFF					
T01-310	M8X40	1	0	072804	\$3.50	\$0.00
ROUND DIVIDER # 1	SCREW, FILLISTER, HEAD CAP 612.12-75					
T01-310	MB-3	1	8	070710	\$1.44	\$11.52
ROUND DIVIDER # 1	WASHER, TAB CONSOLIDATED INC.					
T01-310	NKI22/20	2	2	011403	\$18.54	\$37.08
ROUND DIVIDER # 1	BEARING, NEEDLE, INA 612.06-81 INA BEARINGS					
T01-310	PAP2830P20	1	11	072305	\$6.50	\$71.50
ROUND DIVIDER # 1	BUSHING, METRIC RADIAL, ID1-2/16, OD1-1/4X1-3/16					
T01-310	PBA	1	0	100203	\$37.38	\$0.00
ROUND DIVIDER # 1	BLOCK POWER, BANNER					
T01-310	RF17DT71C4-KS	1	2	180200	\$446.00	\$892.00
ROUND DIVIDER # 1	MOTOR, 1/3HP, 1700 .230/480 VAC SO#880038028.3					
T01-310	RS08B	1	0	071100	\$1.91	\$0.00
ROUND DIVIDER # 1	CHAIN, ROLLER METRIC, FOR R/D					
T01-310	RS08B-L	1	5	150506	\$0.79	\$3.95
ROUND DIVIDER # 1	LINK CONNECTING, FOR CHAIN METRIC RS08B					
T01-310	RX67DT80N4	1	0	180200	\$556.00	\$0.00
ROUND DIVIDER # 1	GEARMOTOR, 376RPM, 1HP, 25MM SO#-860204429.03					
T01-310	SBD1	1	0	100205	\$98.79	\$0.00
ROUND DIVIDER # 1	SENSOR DIFUSED BANNER INC.					
T01-310	SM60503-WAC	50	1	180200	\$16.45	\$16.45
ROUND DIVIDER # 1	BELT MESH SMOOTH FOR FINGER BELTS R/D					
T01-310	TR-6	1	1	013605	\$8.78	\$8.78
ROUND DIVIDER # 1	BEARING, ROAD END, 3/8 IN. BORE SEALMASTER CO.					
TOTAL...						\$19,992.81

And the Winner is...

You folks have really gone easy on our marketing and sales budget this year. We can't give away the **\$100** newsletter prize. OK, one more try this month.

Most folks have seen 24 hour time in one form or another or can easily make the conversion. But, in answer to the last newsletter quiz, if you would like CPMS to do this for you just put a "PM" after entering a 12 hour time. For example, if you enter "5:00 PM", CPMS will magically change it to "17:00".

CPMS Quiz

You have removed a unique piece of equipment from your plant. Can you think what report(s) you would run in order to identify those parts which you probably won't need to stock anymore? Hint: It is in Standard reports and there is more than one Selection condition. You will get partial credit if you can say how you would do it even if you don't have the correct Selection condition.

And, if you don't like that one, how would you combine all the data for two Vendors after you found out they were really the same vendor? (For example, the vendor ident was entered as "AMF" and also "A.M.F.")

Dennis Fleming
IISCO

2337 Hemlock Farms
Lords Valley, PA 18428
Tel.: 570 775-7593
Cell: 570 351-5290
E-mail: iisco@ptd.net
www.TheBestCMMS.com