

As the Wrench Turns

CPMS User's Journal

Tracking Equipment Problems

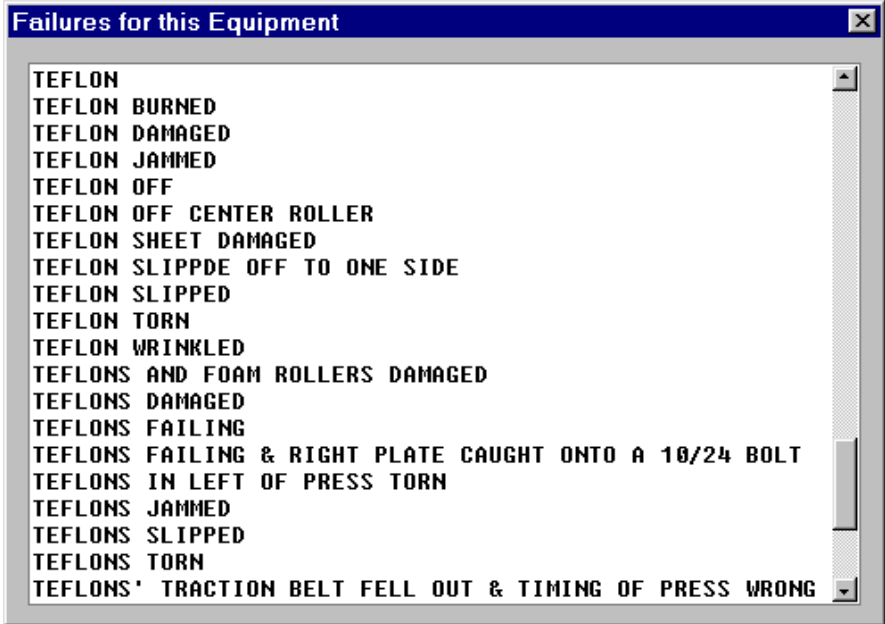
PM's and Breakdown

Equipment Failure Reporting is one of the most important components in CPMS. The only way to properly fine tune your Preventive Maintenance inspections is to analyze problems and trends in your plant.

But, many customers do not have (or take) the time to determine what is the "root cause" of a problem and how can they make a better fix. One reason is that the same problem is entered slightly differently each time it occurs. Because the Failure Description is a "free form" entry, it makes it easy to not know how a specific problem was entered "last time".

CONTENTS

<i>CPMS User's Journal</i>	1
<i>PM's and Breakdown</i>	1
<i>Completion Percentage</i>	3
<i>CPMS Updates</i>	3
<i>And the Winner is...</i>	5
<i>CPMS Quiz</i>	5

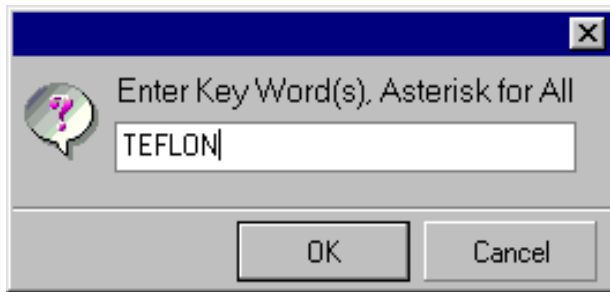


The example above shows how "Broken Teflon Belt" was entered differently, over a period of years, and probably by different people.

- The new Equipment Failure screen form allows you to simply double click (or F3) to choose from all the Failure Descriptions but just for the Equipment Number you are adding or editing. You may also add one or more key words to limit the number of entries in the popup list.
- Alternatively, you can right click and select from all

Equipment Failures in the Failures Description table. You will, of course, want to limit your selection by entering one or more search keywords.

- And, for those who are "set in their old ways", you can still enter failures using free form text.
- And, best of all, the CPMS update program will automatically build the new Failure Descriptions table using your data and then delete duplicate entries.



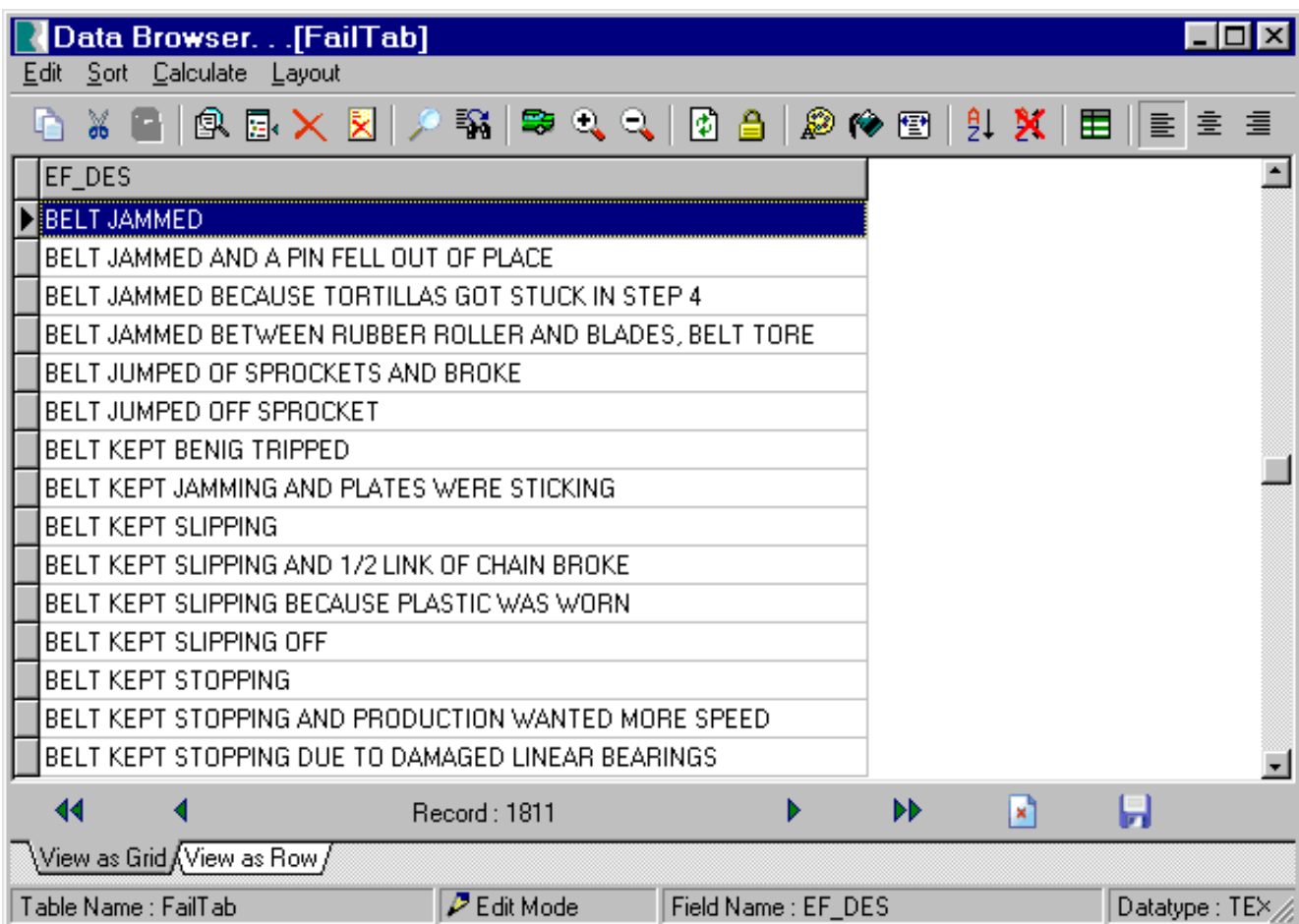
Our goal is to give you the “best of all worlds.” We are convinced that users will pick from a popup window rather than type in the failure. This will certainly be quicker and provide everyone with a real opportunity to standardize their equipment failure descriptions.

In addition, users will have access to the new Failure Descriptions table in order to “clean up” all the entries which are similar but not the same.

In the example below, you have an opportunity to describe “Belt Failures” better. You may decide that you want to differentiate between **jammed**, **slipped**, and **jumped off**, but not different ways of saying those three things.

Some plants will decide to only specify the component problem, such as **Belt Failure**, and describe how the belt failed in the Repair and Corrective Action. A smaller list of Failure Descriptions will allow you to have Histograms and Pareto Charts for the different types of problems you have on all the major equipment in your plant.

The exciting news is that we can automatically capture and help you summarize all of your current Equipment Failure Descriptions.



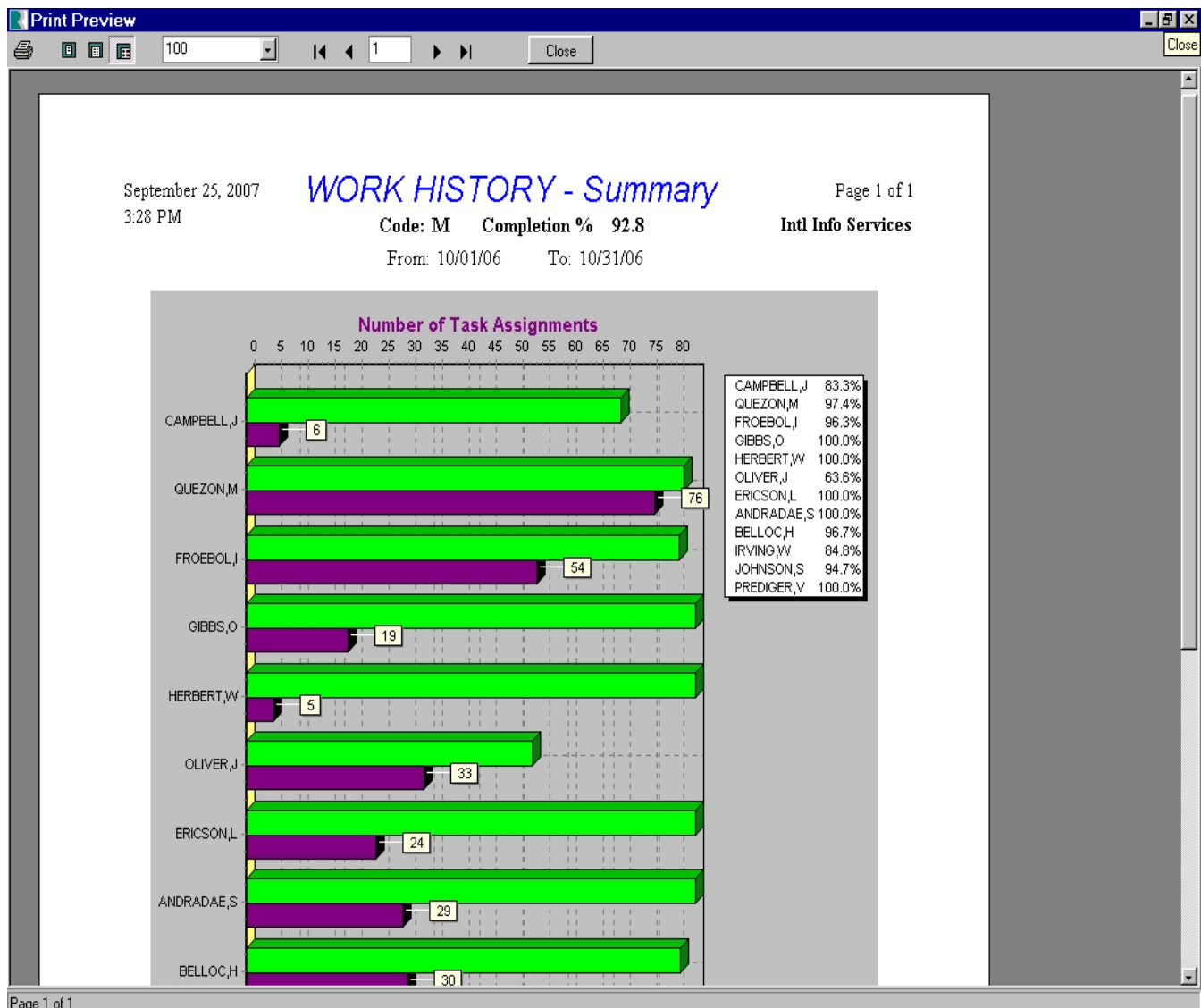
Completion Percentage

A Task Completion Percentage has been added to the Work History Summary graph which matches the same percent at the bottom of the Work History Summary report. In addition, when you select PM's, Work Orders, or All tasks when running this graph/report, your selection is printed at the top of the page along with the Completion Percent. This is, of course, the "bottom line" as to the Maintenance Department's effectiveness.

CPMS Updates

One frustrating item for our development team is when problems are reported which have already been fixed, or changes are requested which have already been made.

Please do your best to keep current with the latest version of CPMS and we will do our best to make sure CPMS is working at 100% and include all of your great suggestions as quickly as possible. On the next page is a list of recent updates.



There were at least twelve new versions of CPMS in series 4.1x and below are corrections and enhancements in the 4.2x series. This week we are distributing version 4.23 which is "the first half" of a lot of exciting changes you will see soon.

.>>> 4.23 changes

- Clean up and standardize all the form popup menus for Equipment, Vendor, Descriptions, etc., lists. Format all fonts to make them easier to read and add the "hint" message where it was missing. When you see the hint "F3 for ..." you can also double click your mouse.
- Change the column format for the Task Number in the Work Order and Equipment Failure screen forms. Now you can copy/paste the Task Number when doing a query or print.
- Add a check box to Display PO's in Purchase Orders to allow you to display all PO's or just Open PO's.
- Correct the popup window when listing tables in Data Base Analyzer, Check the Quality of Your Data
- Reset subtotals for each change of account number for the Purchasing reports. Also, change the transaction code options to OR, OX, and RX (which corresponds to Open Unapproved orders, Open Approved Orders, and Closed/Received Orders.)
- Change the Work History Summary graph to include one letter of the first name (along with the last name) in order to differentiate employees with the same last name.
- Add Task Completion Percent to the top of the Work History Summary graph. Also include the Task Code selection (Examples: *, M, R*)
- New Equipment Failure Description options. The new popup window allows you to standardize problem reporting for your plant. You can continue to enter Failures free form as you do now. You can also select a popup of Failure Descriptions for just the Equipment number you are viewing. Or you can enter a keyword and see all matching entries from the Failure Description table. Please review the article in the October newsletter. (CPMS will automatically load your current entries into the new Equipment Failure Description table.)

>>> 4.22 changes

- Limit the number of PM Duties which should be selected in PM Residuals to twenty so they will fit properly on the PM Work Order work card. (If more than 20 PM Duties are missed, you should check the PM status as Not Done.)
- Add a new Work Order button on the Work Request form so that you can review all of the Open Work Orders for that equipment. Guests cannot make any changes when in the Work Order screen form.
- Add a system constraint which prevents the Transaction Code in Purchase Order Detail from being blank. A temporary multi user restriction when adding/editing PO's has been removed.
Note: Blank Transaction Codes will be changed to "RX" (received).

>>> 4.21 changes

- Change the Equipment Failure graph to a bar chart and optionally print the numeric value for each equipment and manufacturing downtime bar.
- Change the print part tag option to allow for ten label choices (3 new formats) and ensure it is printing tags properly when using Inventory Quantity Adjustments.
- Change the Equipment Failure form to include the Originator and Date when using the Add Work Order button. Also when adding a Work Order from the Process PM Tasks screen.
- Change the sort order of rows in multi table screens to always sort properly.
- Change the "Add Form" and "Edit Form" buttons on screen forms to display the correct list of forms to add and edit.
- Change the PO screen to go directly to the Parts screen when you click on Add Part First. (Also, allow you to go to Add and Edit Form from the Parts screen.)
- Add the Equipment list popup when using the Ad Hoc PM Schedule function.
- In the Self Audit, print out entries in the Master Schedule which have no corresponding PM's in the Mechanics Handbook, and a new option to print out entries in the Mechanics Handbook which have no corresponding PM's in the Master Schedule.

- When part transactions are processed, insure that the unit price and date are updated in the corresponding part/vendor cross reference entry. Correct the PO Note and Delivery columns to display/change properly in the Receipts form and add the popup Y/N for Taxable.
- Lock out other users when using the Add, Edit, Receive, or Generate PO's options.

>>> 4.20 changes

- A new Equipment Failure graph which corresponds to the selections made for the Equipment Failure report, except it always uses your end date and the last fourteen periods. You can specify "periods" as Daily, Weekly, or Period (28 days). This is a very powerful tool which will facilitate locating and analyzing equipment problems in your plant
- Enhance the "Generate PO's for Parts at Minimum" option to automatically build a PO file for all parts at minimum, or just those parts which have been issued in the date range you specify. The number and cost of line items which will be ordered is displayed, and then you can decide if you want to generate these PO's for editing and/or printing.
- Correct the PM and Word Order Work Card to allow for a "Message to the Mechanics" of up to ten lines at the top of each page.
- Initialize Log in/out times to the current date/time when adding a new user.
- Add three new barcode part sticker labels. 1) Use an entire line for the part Description; 2) Allow two lines for the part Description since it can be up to 50 characters; 3) Allow two lines for the part Description and two lines for the part Vendor and Manufacturer. Note: the tradeoff is to remove the last line or last two lines. (Price, PO#, Rcvd; Date Used, On Equip, By)
- When Editing PO's in the Purchasing module, the default sort order is by PO Date. (Previously, the PO's were not sorted.)
- Correct the Employee status (active/inactive) to default to Active when adding a new employee.
- In the new Work Load Balancing spreadsheet and graph, correction for subtotaling the thirteenth period.

Note: If you have missed any of the 4.2x updates, they are cumulative. Just load the most recent.

And the Winner is...

Tin Tam from SnakKing, Commerce, CA, received half credit for almost getting the correct answer in our last newsletter.

The quiz was to print out the equipment which uses pulleys (assumes all pulleys have the word "pulley" in the part description). If you click on the "Look in" button when using Power Search, you can see how to use a key column in one table to locate values in a second table.

CPMS Quiz

And now, another CPMS question from real customers regarding Purchase Orders.

You enter a PO with two detail line items. You print it out and only one line item appears. You check the Edit screen and there are still two line items. What would cause this?

And, for full credit, if you accidentally receive a PO, how would you "unreceive" it?

Dennis Fleming
IISCO

2337 Hemlock Farms
Lords Valley, PA 18428
Tel.: 570 775-7593
Cell: 570 351-5290
E-mail: iisco@ptd.net
www.TheBestCMMS.com