

As the Wrench Turns

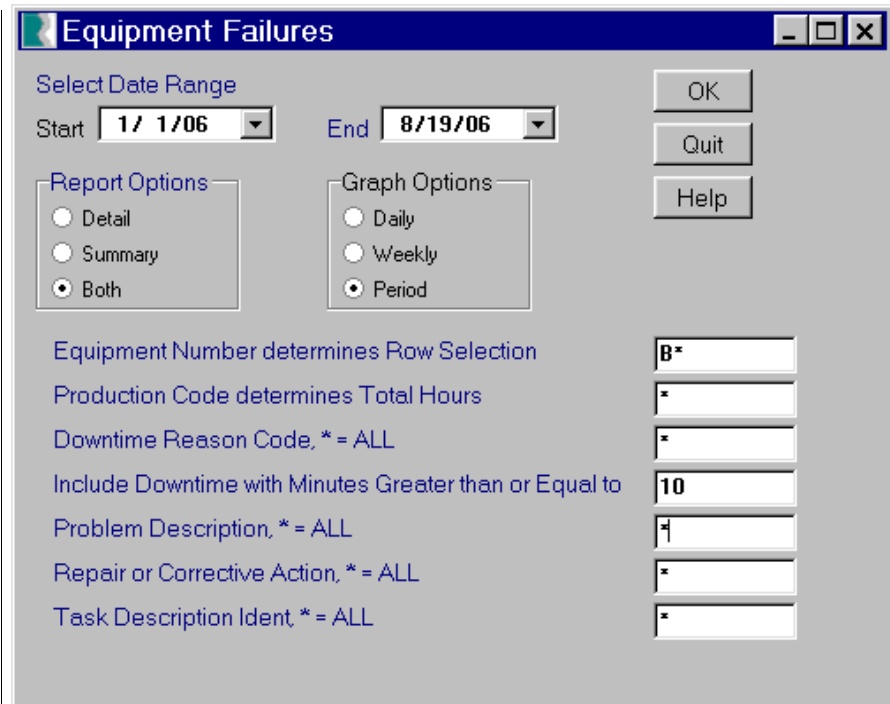
CPMS User's Journal

Two Great New CPMS Tools!

Equipment Failure Graph

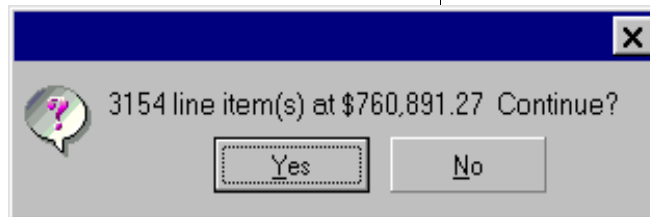
Now, when you print out the Equipment Failure report you can optionally graph the same selection. For example, if your date range is from 1/1/06 to 8/19/06 for your Baggers, the graph will use the same ending date for the last 14 periods for the identical selection. You decide if a "period" is a day, week, or month (28 days).

We have always stressed the importance of maintaining accurate equipment failure data, and with the new Equipment Failure graph, you will really see the benefits of tracking equipment problems.



Generate PO's for Parts at Minimum

their minimum quantity. Many plants have not set up min/max levels for spares and may feel they can't use this option. If you don't select a date range, CPMS will use all parts at minimum, which is \$760,891.27 in this example.

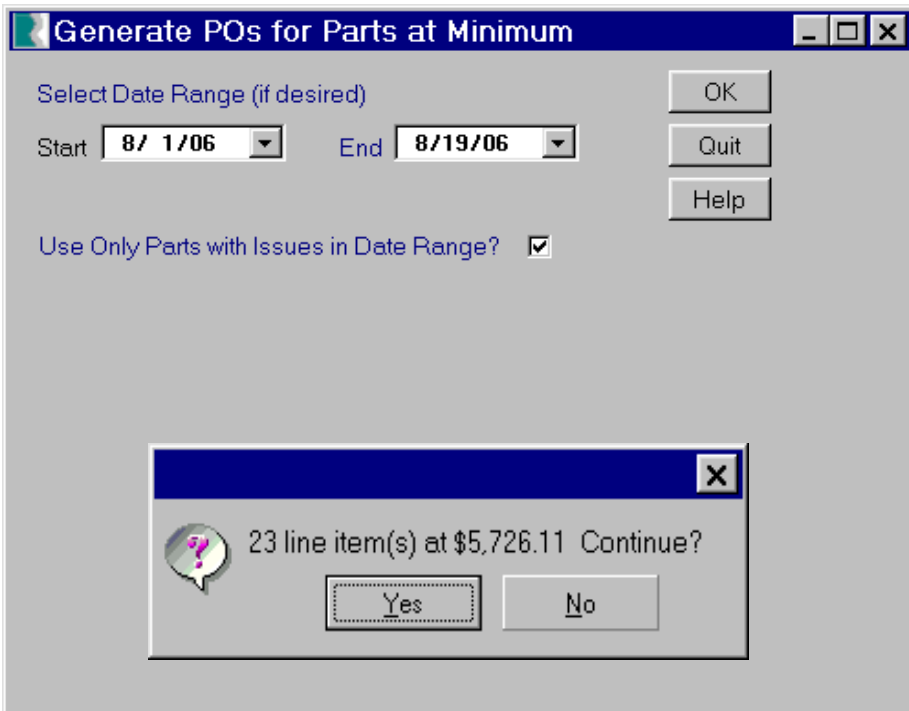


This new feature allows you to automatically create all the PO's you need for parts at

But, as shown on the next page, you can use just recently issued parts to determine what will be ordered.

CONTENTS

CPMS User's Journal 1
 Equipment Failure Graph 1
 Generate PO's for Parts at Minimum 1
 Using the new Downtime Graph 3
 And the Winner is... 6
 CPMS Quiz 6



In this example, “today” is 8/19/06 and so when the user selects parts at minimum issued since 8/1/06, this will generate PO’s totaling \$5726.11 which are parts you know you need.

The only requirement is that you need to set up proper min/max levels for parts with recent activity. Next, you can display, change, delete, and/or approve any/all of the PO’s just generated. We have customers who always use this feature to order parts and asked us why anyone would order parts by entering PO’s one at a time.

We encourage everyone to try out this option and let us know if you have any suggestions.

PO#	PO_Date	Due_Date	Vendor	Part_Number	Description	Qty
7179	03/19/07	03/26/07	ACKLANDS G	CA30C FAN	CIRCULATING FAN, 3SPD, HEAD ONLY	1
7180	03/19/07	03/26/07	BANJO CORP	25-UV200FFPD	VALVE, 2WAY, FPT, SINGLE UNION, POLY, FOOD GRADE	1
7181	03/19/07	03/26/07	BURFORD	C05823	TIMING HUB SPROCKET-572C	1
7182	03/19/07	03/26/07	ECM	302-276	ASCO G-9 REBULID KIT AC	2
7183	03/19/07	03/26/07	GOODALL	DP00201	BELT, PRODUCT DEPANNER INFEED 76.75" X 3.5"	4
7184	03/19/07	03/26/07	IMPACT	BP00111	ROLLER, BIG BELT TAIL ROLLER 3i	1
7185	03/19/07	03/26/07	MOTION	081SA400K046T	SOLENOID, 1/4 MK8 2POS 1COIL UNIT ONLY	2
7185	03/19/07	03/26/07	MOTION	10514	HORTON SHAFT	1
7185	03/19/07	03/26/07	MOTION	203RR2	BEARING, .625 X 1.58 X .72	3
7185	03/19/07	03/26/07	MOTION	415112-65BF	PULLEY KIT TOP ASSY	1
7185	03/19/07	03/26/07	MOTION	7150-101-004	RETRO EYE, WARNER PT# MCS-500-01	2
7185	03/19/07	03/26/07	MOTION	D2600-10TX1-1/2	SPROCKET, WHITE	1
7186	03/19/07	03/26/07	NORWESCO	PS0011	BELT, PRODUCT PAN SELECTOR 2 X 87	3
7186	03/19/07	03/26/07	NORWESCO	UP00101	BELT, PRODUCT SLICER PRESSURE 1.25 X 31.625	38
7186	03/19/07	03/26/07	NORWESCO	UP00104	BELT, PRODUCT DISCHARGE 12" X 83.375"	1
7187	03/19/07	03/26/07	STEWART C.	09P-00-191	BLACK SUCTION CUPS	1
7188	03/19/07	03/26/07	U.B.E. 2	TS85-183	GUIDE ARM, CENTER BLADE	2
7188	03/19/07	03/26/07	U.B.E. 2	TS85-186	GUIDE INSERT, SLICER BLADE TOP	4
7189	03/19/07	03/26/07	UNIV. REW	0030C-1BBB-00D1	MOTOR, 3/1.5HP 575V-3PH 1725/850RPM 1.125S 184T	1
7189	03/19/07	03/26/07	UNIV. REW	BP5011T01	BRUSH, MOTOR	6
7190	03/19/07	03/26/07	WESTBURNE	800T-XD4	CONTACT BLOCK	2
7190	03/19/07	03/26/07	WESTBURNE	802T-W3	LEVER	1
7190	03/19/07	03/26/07	WESTBURNE	BZ2RQ784	LIMIT SWITCH	3

Using the new Downtime Graph

Now, when you print out the Equipment Failure report, after making your selections you are asked if you want to first print a graph. See the new "Graph Options" box with Daily, Weekly, or

Period on page one of this newsletter. Your selected end date will always be used with the previous 14 days, weeks, or periods (28 days).

In this example the "Roll Line" problems were graphed and although "Baggers" didn't create a lot of Manufacturing downtime (red) there were many Equipment problems (yellow).

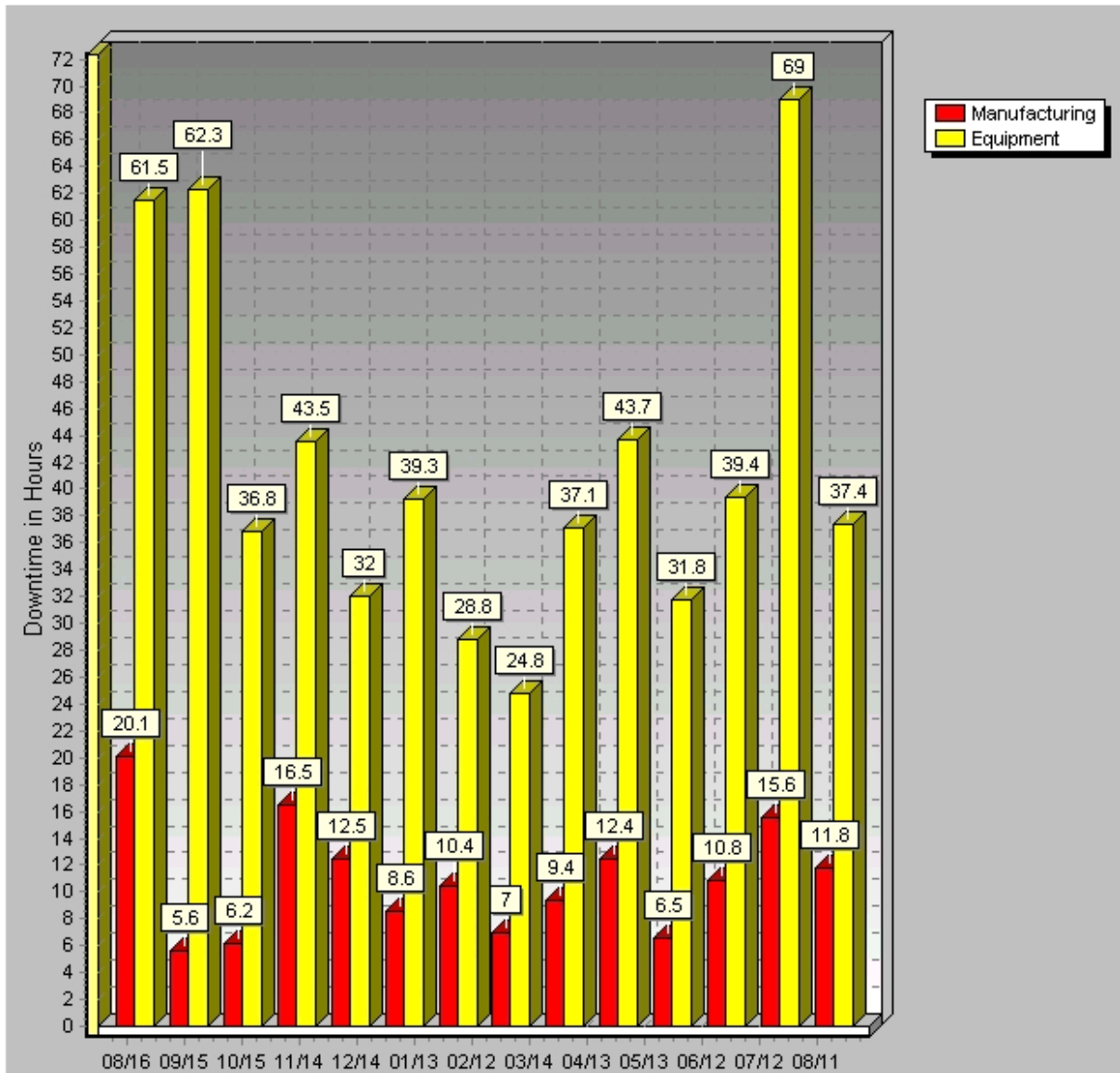
March 19, 2007
3:18 PM

Equipment Failures ROLL LINE

Page 1 of 1

Your Company Name

By Period Ending on: 08/19/06



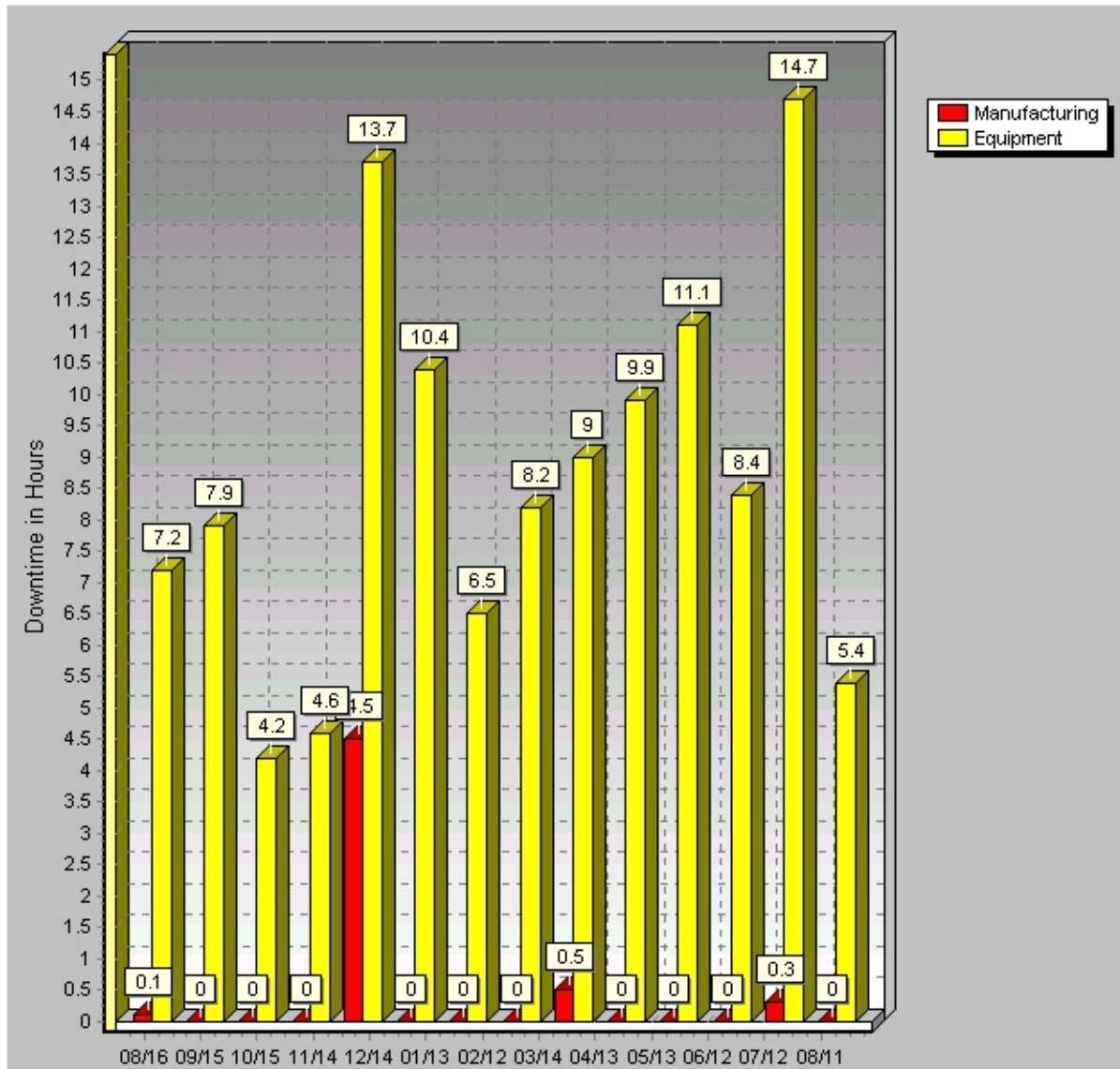
March 20, 2007
9:23 AM

Equipment Failures BAGGERS

Page 1 of 1

Your Company Name

By Period Ending on: 08/19/06



When printing graphs, you are asked to enter a title (Roll Line, Baggers, etc.) and you can optionally print the value (7.2, 7.9, etc.) on top of each bar.

Notice in the above example that although there were numerous hours of lost equipment time on the baggers, there was only one month in December, 2005, that there was manufacturing

downtime. Many of the problems in your plant may require too much time and/or money to correct the way you would like. But, you should always have the graphs and reports necessary to document the problem and your recommendation.

In this example, where there is a spare Bagger which can use as a backup, the graph depicts what happens when the spare is also broken.

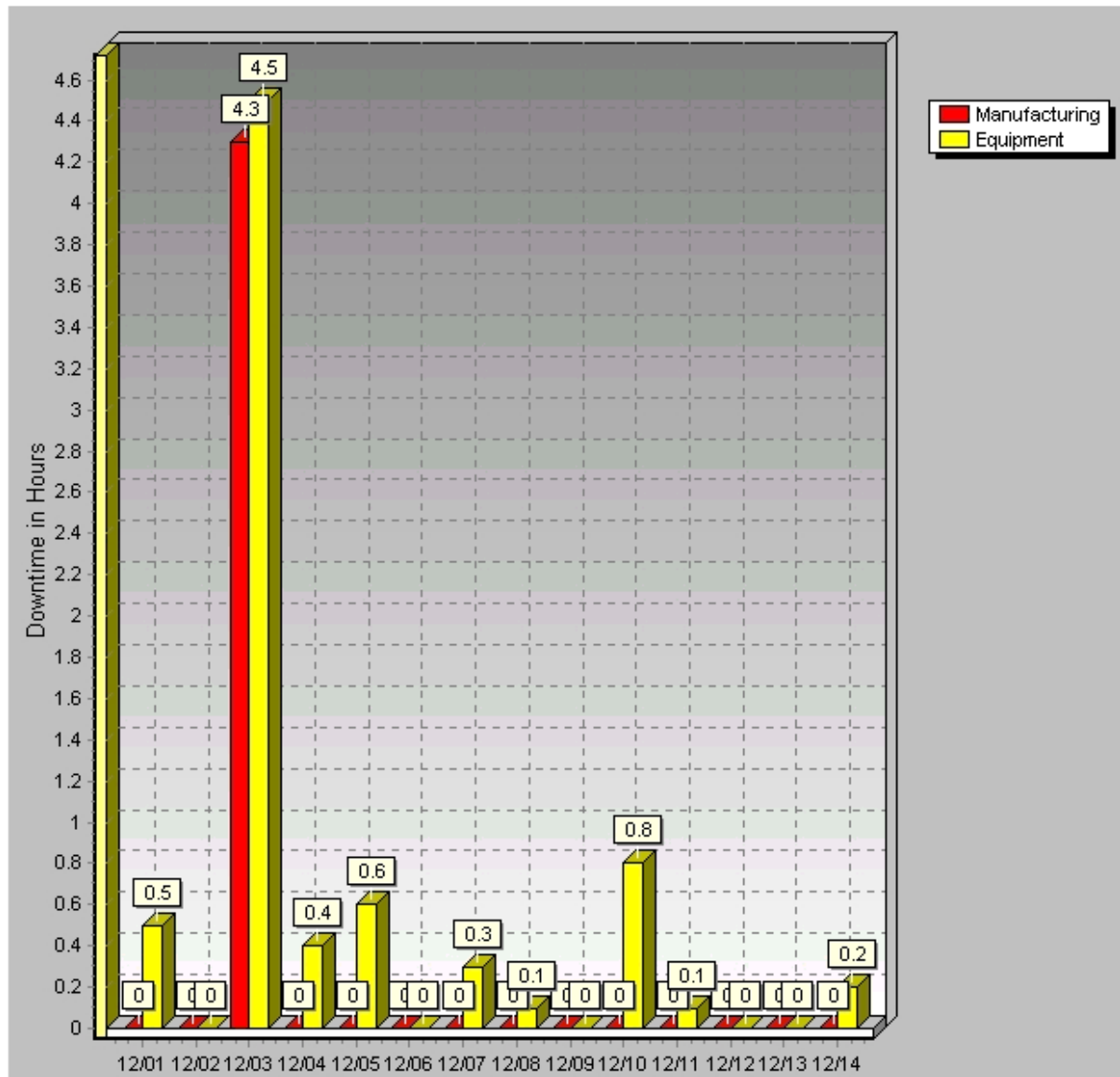
March 20, 2007
9:39 AM

Equipment Failures BAGGERS

Page 1 of 1

Your Company Name

By Day Ending on: 12/14/05



By switching the frequency to Days, the graph shows the Manufacturing downtime occurred on 12/03/05. We have always stressed the importance of recording both equipment and manufacturing problems so that “little” problems and trends can be monitored and corrected before they result in production stoppages.

Please take a minute and try out this new feature at your plant and see how quicky you can produce meaningful graphs.

Note: The reason for the fourteen intervals is so that when you are graphing months (periods) you can compare this period with the same period a year ago in order to evaluate trends.

And the Winner is...

Alex Velazquez from George Weston Bakeries, Reading, PA; Cindy Like from Lewis Brothers, Vincennes, IN; and Tin Tam from Snak King, City of Industry, CA won the quiz in the last CPMS newsletter.

The quiz was to look for a grammar/spelling mistake in the October newsletter. Although there was more than one mistake, the one we were looking for was where we said. "And, as we are so *found* of repeating..."

CPMS Quiz

For \$100, this is a question from a real customer. "What equipment uses pulleys?" We have shown you how to print/display information from one table based upon data in a second or even third related table. On the Power Search screen, try the "Look in" button to see the proper format.

Assume the pulleys are in your spare parts and have the word "pulley" in the part description. Can you print out the standard report for Equipment and the Part/Equipment Xref report for pulleys?

Dennis Fleming
IISCO

HC8 Box 8432
Lords Valley, PA 18428
Tel.: 570 775-7593
Cell: 570 351-5290
E-mail: iisco@ptd.net
www.TheBestCMMS.com