

# As the Wrench Turns

## CPMS User's Journal

### Better late than never?!

#### CPMS 4.0?

The only thing worse than getting a new version of software out late is getting it out too soon. Although virtually every program on the market today still has some bugs in it when it reaches the market, we would like to think that the vendor corrected all the problems they knew about before sending it out. This has always been the case with CPMS and we want to keep it that way.



Without going into all the gory details, we are still busily crossing

#### CONTENTS

<i>CPMS User's Journal</i> . . . . .	1
<i>CPMS 4.0?</i> . . . . .	1
<i>Long-awaited Features</i> . . . . .	1
<i>Self Audit?</i> . . . . .	3
<i>CPMS 4.0 Demo</i> . . . . .	3
<i>And the Winner is...</i> . . . . .	3
<i>CPMS Quiz</i> . . . . .	4

our T's and dotting our I's in an effort to finish up 4.0 as quickly as possible. As you are aware from our last newsletter, this is not an upgrade. Instead, it is a complete rewrite of both our data base manager, RBase, and CPMS in order to have a 100% Windows style program.

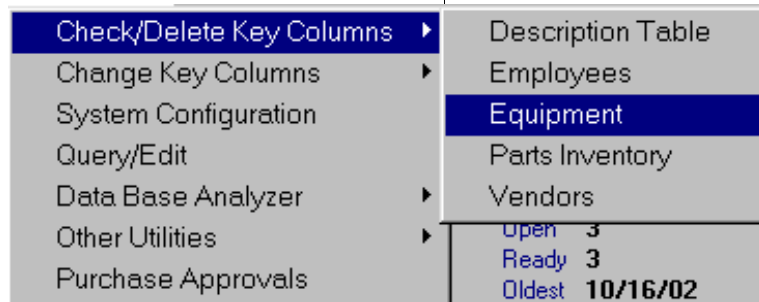
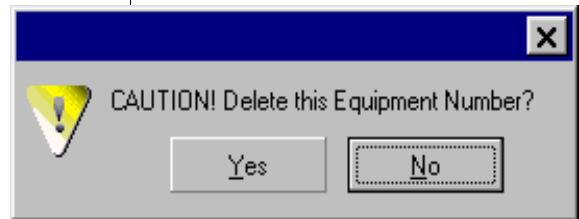
In the past two months there have been more than six new versions of RBase which have included both corrections and enhancements. As a developer, we are always looking for stability in the products we use. As a customer, you don't want a program which is constantly undergoing change and you lose confidence as corrections and enhancements blur into a single system.

Again, thank you for your patience and continue to enjoy all the features available in CPMS 3.1a as we finalize 4.0.

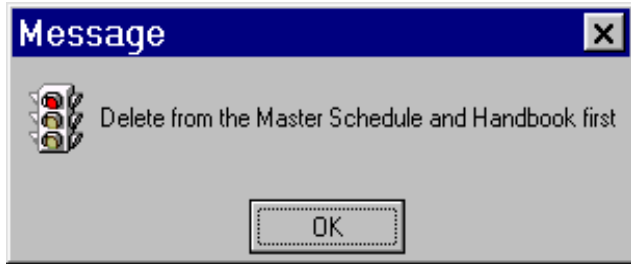
#### Long-awaited Features

The good news is that we are not "resting on our laurels". This has been a great opportunity to include many outstanding requests. Some of these go back a long time. For example, how about deleting key columns like old or obsolete parts, equipment, employees, and vendors?

Our concern has been that you don't want to accidentally shoot yourself in the foot. But, it is your foot, and as long as you know you may be losing hours and costs associated with what you are deleting, it is your call. Our job is to make your job easier.



We did leave in a couple of safeguards in order to avoid leaving holes in your data base. For example, if you want to delete an equipment number, employee number, or task description number which is being used in your Master Schedule, you will need to reassign or delete it there first.



Likewise, if you want to delete a manufacturer ident from your Vendor table which is being used in Parts, Equipment, Motors, or Gear Boxes, you will need to reassign or delete it first.

At our Work Shops we have talked about the danger of deleting key columns. For example, in a case where you have carefully documented the high cost of operating a piece of equipment and in various reports you have justified replacing it. Now, if you use this new capability to delete the old machine, what happens to all of your supporting data? It's gone, and you will need to go to a backup copy of CPMS in order to print any reports with the old equipment number.

Print Preview

125% 1 Close

October 25, 2004 5:39 PM

### Detail Preventive Maintenance Work Card

Page 1 of 1  
YourPlantName

From 10/11/04 To: 10/17/04

**THIS IS WHERE A MESSAGE TO THE MECHANICS IS ENTERED.**

EQUIPMENT	SCHEDULED	MECHANIC	SKILLS	PR	DATE FINISHED	START TIME	PM Minutes	Status	Repair Done	Needs Repair	Est Minutes	Item Number
B124	04/14/04	HERBERT, WILLIAM		1		0:00						
#6 MIXER WEEKLY												
1	CHECK SHAFT BEARINGS, CONDITION OF GLAND SEALS,						1					
2	ELECTRICAL: CHECK CONTACTORS, CLEAN OR REPAIR AS NECESSARY						2					
3	DOOR: CHECK DOOR OPERATION & LINEAR LIMIT SWITCH						3					
4	CHECK DOOR LIFTING CHAINS						4					
5	CHECK DOOR SEAL CONDITION, LEAKAGE & SPACING BETWEEN DOOR & SEAL						5					
6	CHECK DOOR WEAR STRIP, BRONZE WEAR PAD FOR PROPER SETTING						6					
7	CHECK SPIDERS FOR CRACKS						7					
8	ELECTRICAL: CHECK CONTACTORS, CLEAN OR REPAIR AS NECESSARY						8					
9	TROUGH: CHECK CONDITION OF LINER						9					
10	CHECK CLEARANCE OF AGITATOR SPIDERS						10					
11	CHECK DRAIN OPERATION, CHECK ALL MOUNTING BOLTS						11					
Total:												

Item Equipment Task Description of Work Performed Necessary Repairs or Notes

Page 1 of 1

Note some of the changes in the new Detail PM Work Card. A number of little nice things have been added. For example, as in all the new reports, the full date and time are in the upper left corner. Page 1 of X and your plant name are on the right-hand side. The “message to the mechanics” is in bold.

And, something which has been a little annoyance for a long time is where the headings for the six columns of check boxes always required that you look at a key at the bottom of the report. Now, with vertical labels, this is no longer the case.

## Self Audit?

Earlier this year, our newsletter talked about setting up Standards and Measurements for your department in order to move up to a higher level of performance. What we have found is how easy it is for a plant to be “fully operational” with CPMS and in reality there are some serious potholes behind you.

Take this simple test to see if you have completed your equipment list properly. With just two reports you can quickly determine if you are performing all the necessary PM in your plant.

First, print out your equipment list for all of your In Service equipment (In Service = “1”). Perform a physical inventory of all of your plant equipment and look for equipment on the list which you cannot locate in the plant and vice versa. While virtually all plants will be less than 100% accurate, that is your goal. Consider that just one piece of equipment missing from CPMS can result in a machine not being PM’d and cause equipment failure and lost production time.

Next, check what equipment in your Equipment list has no PM’s assigned to it in the Master Schedule. In other words, even though it is in your equipment list there is no PM being done on it. To print out this report got to Print, Standard Reports, Equipment (Standard) and place the following condition in your Selection box:

**EQ\_NBR NOT IN (SEL EQ\_NBR FROM SCEDM) AND EQ\_INSVC = "1"**

In English, this condition says “Select Equipment Numbers which are Not In the Master Schedule and are In Service”. Below the selection box, choose “Save” in your Prior Selections so you can run it again after making any necessary corrections.

## CPMS 4.0 Demo

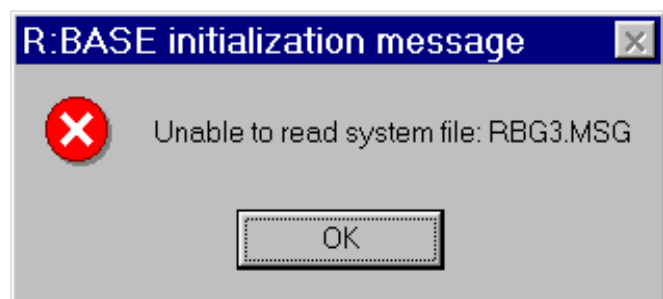
We recently sent an email to everyone with instructions on how to download and run a demo version of CPMS 4.0 with the hope that we would receive some comments and suggestions from our faithful CPMS users. And... we only had a few responses. That’s OK because it must mean you love what you have seen so far and are anxiously awaiting the new version. Or, it could mean you are just too busy.

As a developer we also receive pre-release versions of our data base program along with requests from Microsoft to be part of their “beta testers”. The truth is we just don’t have the time although we have been actively involved with our data base company RBTi in helping them finalize their new 7.x version of RBase.

In any event, if you do have a chance to take a look at the demo please do so and pass along any comments.

## And the Winner is...

Marcella Maulfair at Holsum Baking, Phoenix, AZ was the only winner and recipient of \$100 in the last newsletter contest. The question was, what would cause the following message to appear when starting up CPMS?



And the answer is an invalid Rbase.INI file. This is the configuration file used when you start up CPMS and, she found the answer by performing a word search of

prior newsletters! It *pays* to keep old copies of, “As the Wrench Turns.”

On a network installation, in the current 3.1a version of CPMS, all users must be “mapped” using the same drive letter or you will most likely see this error message. If the RBase Configuration file (Rbase.INI) is deleted or not found, a new one will be created when you start up CPMS.

## CPMS Quiz

This should be an easy one. The new Detail Preventive Maintenance Work Card report on page 2 has a programming error. (The programmer has been severely punished and the error has been corrected.) Can you find it?

Dennis Fleming  
IISCO

2337 Hemlock Farms  
Hawley, PA 18428  
Tel.: 570 775-7593  
Fax: 570 775-9797  
Cell: 570 351-5290  
E-mail: [iisco@ptd.net](mailto:iisco@ptd.net)  
[www.TheBestCMMS.com](http://www.TheBestCMMS.com)